



## Flat 2, Crown House, La Rue de la Croix au Maitre, St Martin, Jersey, JE3 6HW

Asking price £325,000

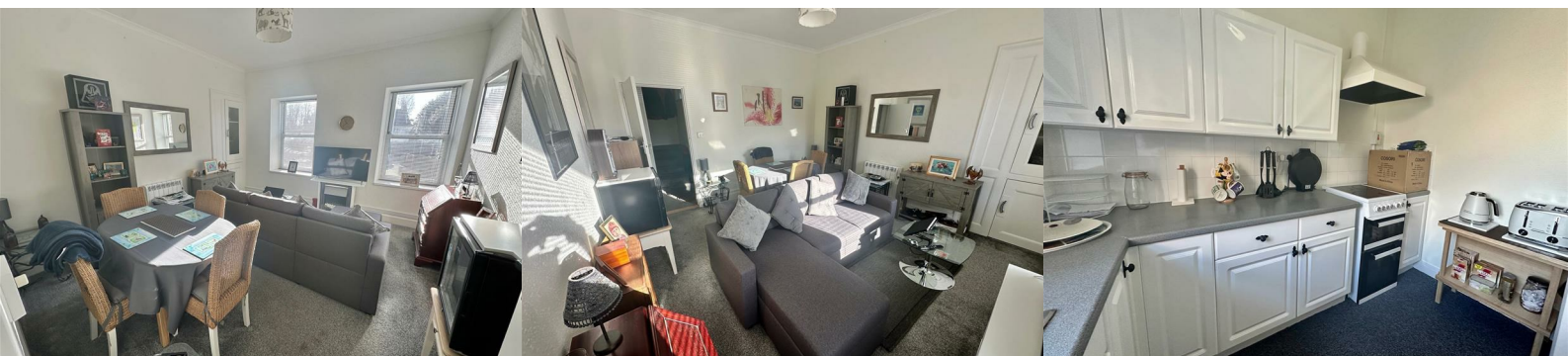


We are delighted to present Flat 2 at Crown House, a bright and spacious one bedroom duplex apartment ideally positioned in the heart of St Martin's Village, located above Landes Interiors and benefiting from designated parking for one car.

The apartment enjoys excellent natural light throughout the downstairs, with large windows in both the kitchen and lounge creating a wonderfully airy feel. Upstairs, the bedroom is generously proportioned and is complemented by a smart fully tiled bathroom.

Perfectly placed for village living, the property has a superb range of amenities on the doorstep including M&S, the doctors, vets, pharmacy and the local pub and eatery. It is also exceptionally well connected, with the number 3, 13 and 23 bus routes close by.

Viewing is highly recommended.





First Floor

Hallway

Carpeted entrance hall with doors to kitchen, lounge and storage cupboard. Carpeted stairs to first floor.

Kitchen 9'7" x 7'6" (2.94 x 2.3)

A range of high and low kitchen units with laminate worktops and tiled splash backs. Standalone double oven, fridge / freezer and washer drier. Large window letting in plenty of natural light.

Lounge / dining 13'5" x 13'1" (4.1 x 4.0)

Great sized lounge / diner laid to carpet with high ceilings and 2 large windows letting in plenty of natural light. Built-in storage.

Second Floor

Bedroom 14'9" x 14'5" (4.5 x 4.41)

Large double bedroom laid to carpet. Window overlooking neighbouring properties, fields and distant sea views.

Bathroom 8'1" x 6'6" (2.465 x 2.0)

Fully tiled walls and floor. Corner shower and enclosure, WC & wash hand basin with mirrored cupboard above.

Parking

Designated parking for 1 car. Plenty of visitor parking within the village.

Services

All mains excluding gas. Mains drains, mains water, electric heating. Service charge £112/month. Owner rates £160/year.

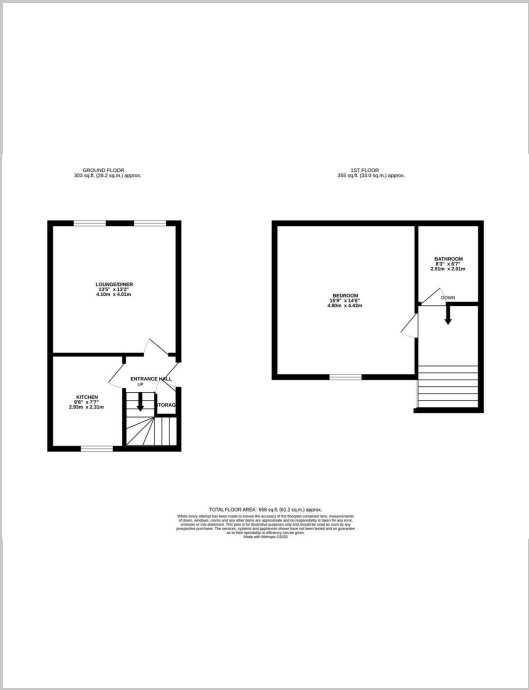
Directions

Flat 2, Crown House is situated above Landes Interiors next to St Martin's Parish Church.

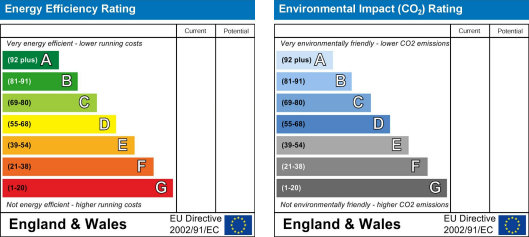
Area Map



Floor Plan



Energy Efficiency Graph



These particulars, whilst believed to be accurate are set out as a general outline only for guidance and do not constitute any part of an offer or contract. Intending purchasers should not rely on them as statements of representation of fact, but must satisfy themselves by inspection or otherwise as to their accuracy. No person in this firms employment has the authority to make or give any representation or warranty in respect of the property.